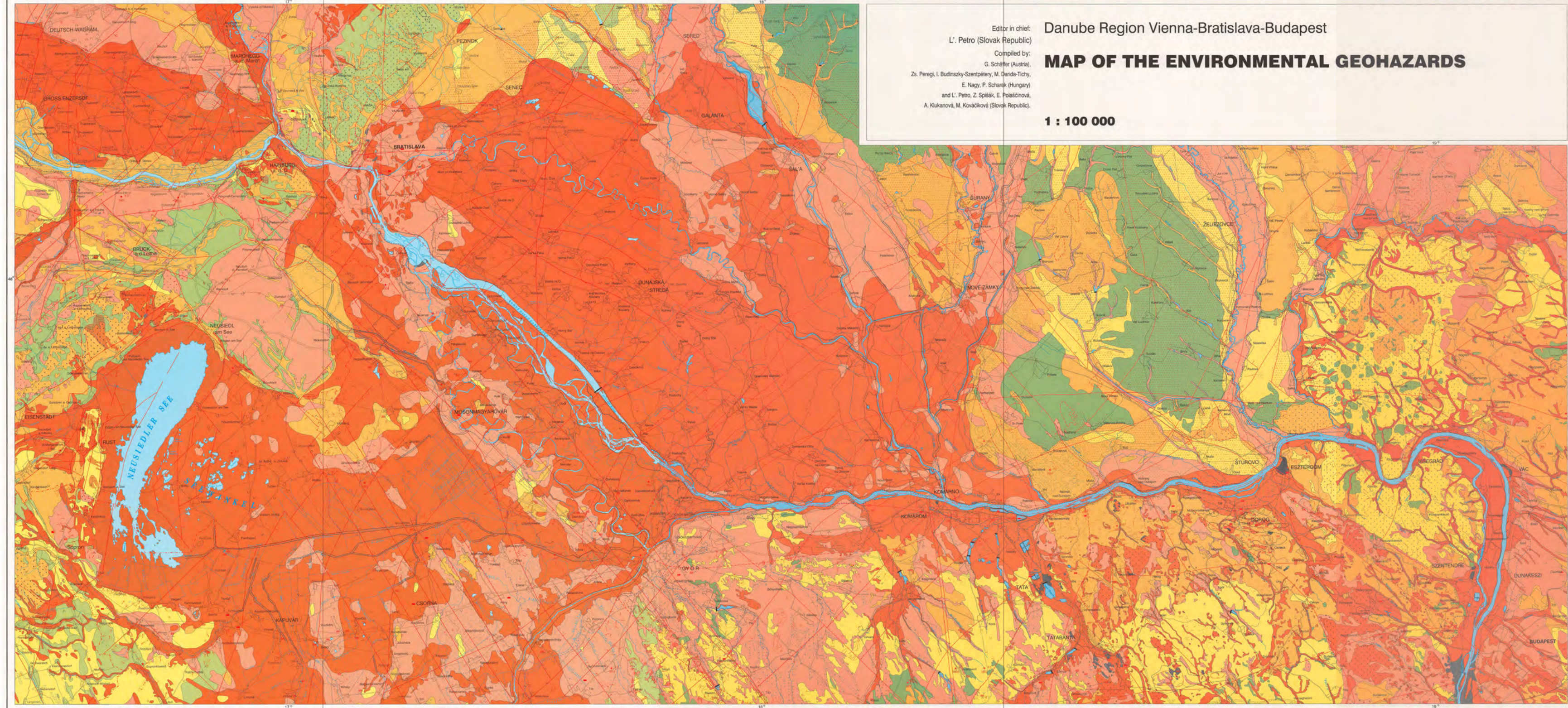


Editor in chief:
L'. Petro (Slovak Republic)
Compiled by:
G. Schäfer (Austria),
Zs. Peregi, I. Budinsky-Szentpétery, M. Darida-Tichy,
E. Nagy, P. Scharek (Hungary)
and L'. Petro, Z. Spišák, E. Polaččinová,
A. Klukanová, M. Kováčiková (Slovak Republic).

Danube Region Vienna-Bratislava-Budapest

MAP OF THE ENVIRONMENTAL GEOHAZARDS

1 : 100 000



- A. NATURAL HAZARD**
- 1. Pollution sensitivity**
 - Highly sensitive to pollution
 - Sensitive to pollution
 - Not sensitive to pollution
 - Very low sensitivity to pollution
 - Low sensitivity to pollution
 - Medium sensitivity to pollution
 - High sensitivity to pollution
 - 2. Hydrological and hydrogeological phenomena**
 - Highly sensitive to hydrological and hydrogeological phenomena
 - Sensitive to hydrological and hydrogeological phenomena
 - Not sensitive to hydrological and hydrogeological phenomena
 - Very low sensitivity to hydrological and hydrogeological phenomena
 - Low sensitivity to hydrological and hydrogeological phenomena
 - Medium sensitivity to hydrological and hydrogeological phenomena
 - High sensitivity to hydrological and hydrogeological phenomena
 - 3. Mass movements**
 - Highly sensitive to mass movements
 - Sensitive to mass movements
 - Not sensitive to mass movements
 - Very low sensitivity to mass movements
 - Low sensitivity to mass movements
 - Medium sensitivity to mass movements
 - High sensitivity to mass movements
 - 4. Tectonics**
 - Highly sensitive to tectonics
 - Sensitive to tectonics
 - Not sensitive to tectonics
 - Very low sensitivity to tectonics
 - Low sensitivity to tectonics
 - Medium sensitivity to tectonics
 - High sensitivity to tectonics
 - 5. Seismicity**
 - Highly sensitive to seismicity
 - Sensitive to seismicity
 - Not sensitive to seismicity
 - Very low sensitivity to seismicity
 - Low sensitivity to seismicity
 - Medium sensitivity to seismicity
 - High sensitivity to seismicity
- B. ANTHROPOGENIC HAZARD**
- 1. Deposition**
 - Highly sensitive to deposition
 - Sensitive to deposition
 - Not sensitive to deposition
 - Very low sensitivity to deposition
 - Low sensitivity to deposition
 - Medium sensitivity to deposition
 - High sensitivity to deposition
 - 2. Mines**
 - Highly sensitive to mines
 - Sensitive to mines
 - Not sensitive to mines
 - Very low sensitivity to mines
 - Low sensitivity to mines
 - Medium sensitivity to mines
 - High sensitivity to mines
 - 3. Subsidence**
 - Highly sensitive to subsidence
 - Sensitive to subsidence
 - Not sensitive to subsidence
 - Very low sensitivity to subsidence
 - Low sensitivity to subsidence
 - Medium sensitivity to subsidence
 - High sensitivity to subsidence